

"CONCOURSE QUALITY, HOBBYIST PRICE"



12007 W. PEORIA AVENUE
EL MIRAGE, AZ 85335
(623) 935-2558
(623) 935-2579 Fax

DELUXE REPORT



Proud to display this symbol

Copyright Kevin Marti 2008

Thank you for your interest in our services. We have determined the following information for your car from the Ford Database we have:

VEHICLE ORDER IMAGE:

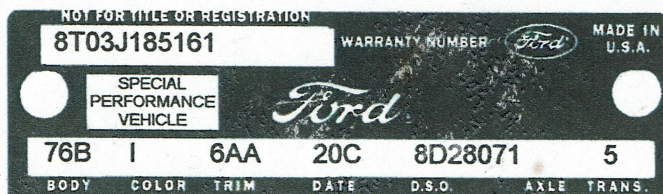
12345678901234567890123456789012345678901234567890123456789012345678901234567890
8T03J185161 I 6A 41 20C3136 2807 7BKC 3 5 5 D 2 D 1 X 84X999 B 2

DOOR DATA PLATE INFORMATION

Serial Number 8T03J185161-03136

8 1968
T Built at Metuchen
03 Shelby Convertible
J 302-4V Engine
85,161st Mustang scheduled for production at Metuchen
3,136th Shelby scheduled for production

76B Shelby Convertible
I Lime Gold Paint Ford #2041-A
6AA Black Décor Bucket Seats
20C Scheduled for build March 20, 1968
8D2807 Home Office Reserve ordering district under
order number 2807
1 3.89 standard axle ratio
5 Four-Speed Manual Transmission



IMPORTANT DATES:

ORDER RECEIVED: 02/07/68
CAR SERIALIZED: 03/07/68
BUCKED: 03/14/68
SCHEDULED FOR BUILD 03/20/68
ACTUALLY BUILT 03/19/68
RELEASED: 03/20/68
SOLD: 03/17/69

ORDER TYPE: RETAIL
DSO ITEM # 3136
DEALER: 47C214
MARSHALL FORD INC
5909 DAYTON-XENIA RD
DAYTON OH 45432

Your vehicle was ordered with the following options:

- White Power Convertible Top w/ Glass Backlite
- Extra Cooling Package
- Visibility Group
- Power Steering
- Power Front Disc Brakes
- Tilt-Away Steering Column
- AM Radio
- Interior Décor Group
- Heavy Duty Battery
- Tachometer and Trip Odometer
- Front and Rear Bumper Guards
- Wheel Lip Mouldings

Your car was actually produced on March 19 1968, one day ahead of schedule.

Kevin Marti
Kevin Marti

STATISTICS

YOUR CAR WAS 1 OF:

- 197 PAINTED THIS COLOR
- 157 WITH THIS PAINT/TRIM COMBINATION
- 214 WITH THIS ENGINE/TRANSMISSION
- 404 ORDERED AS GT-350 CARS
- 893 ORDERED WITH WHITE TOP

FOR THE 1968 SHELBY CONVERTIBLE